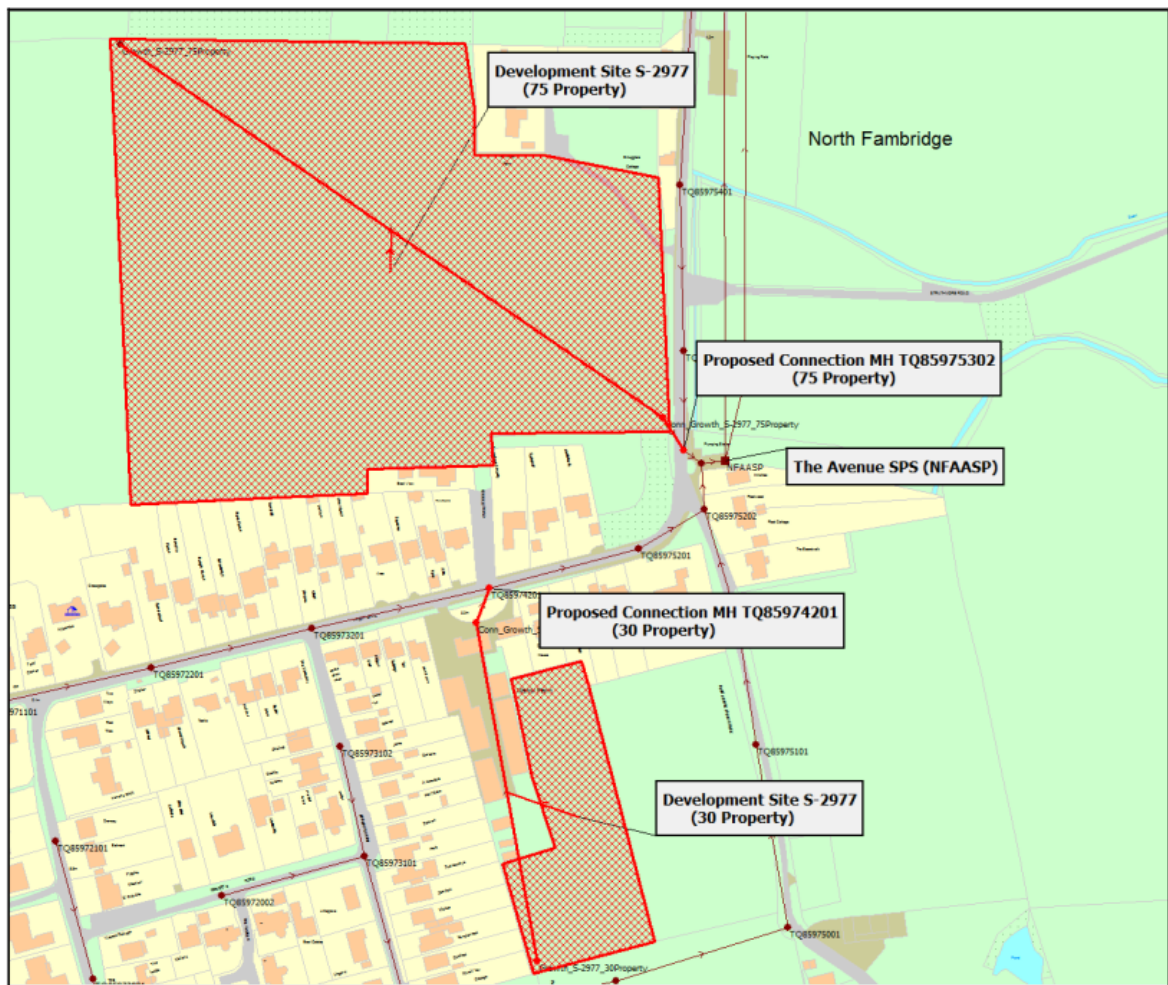
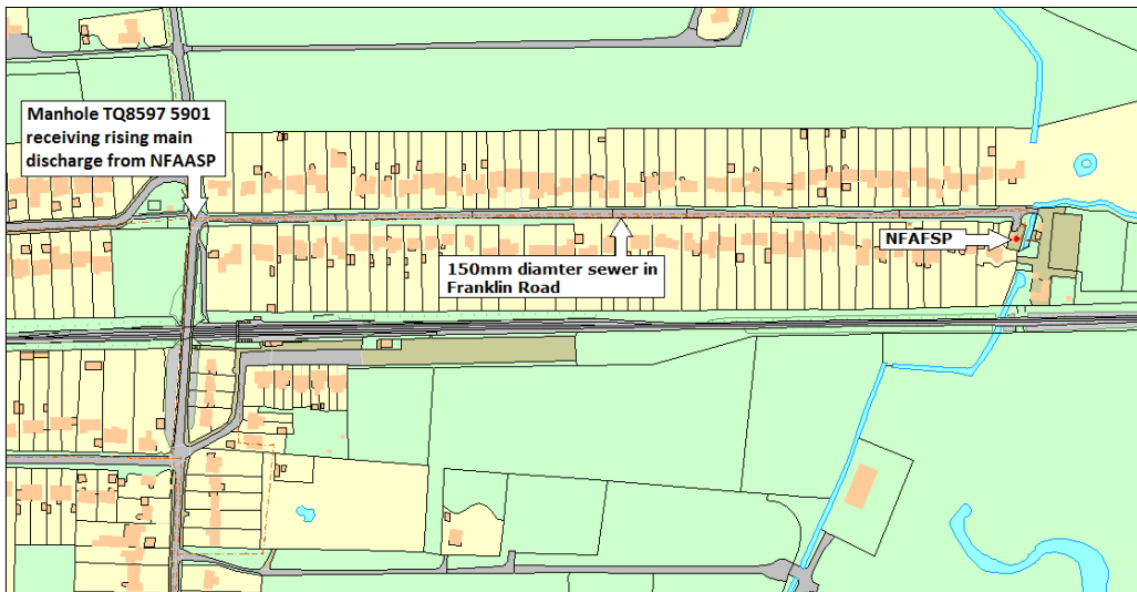


**Figure 1 showing the development site and downstream trace of the sewerage network to the WRC**



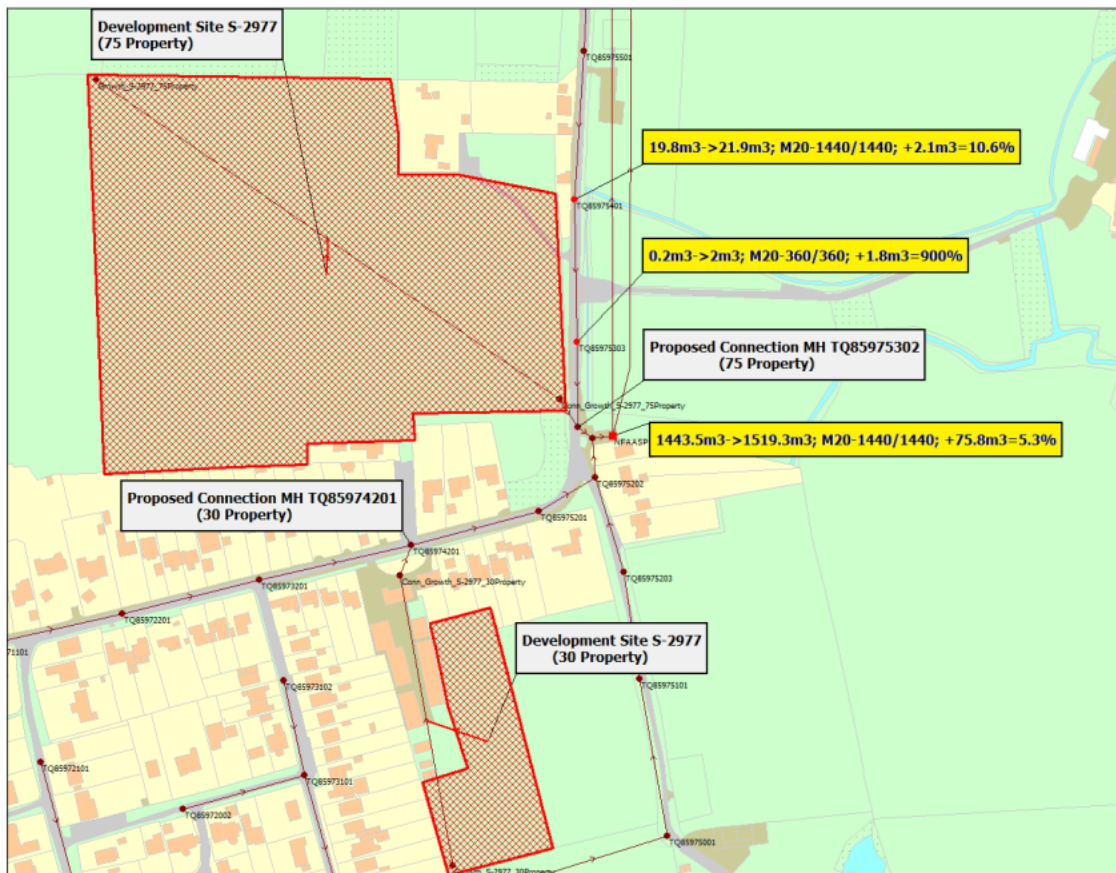
**Figure 2 showing the proposed connection points in relation to the development parcels**

### Appendix 3



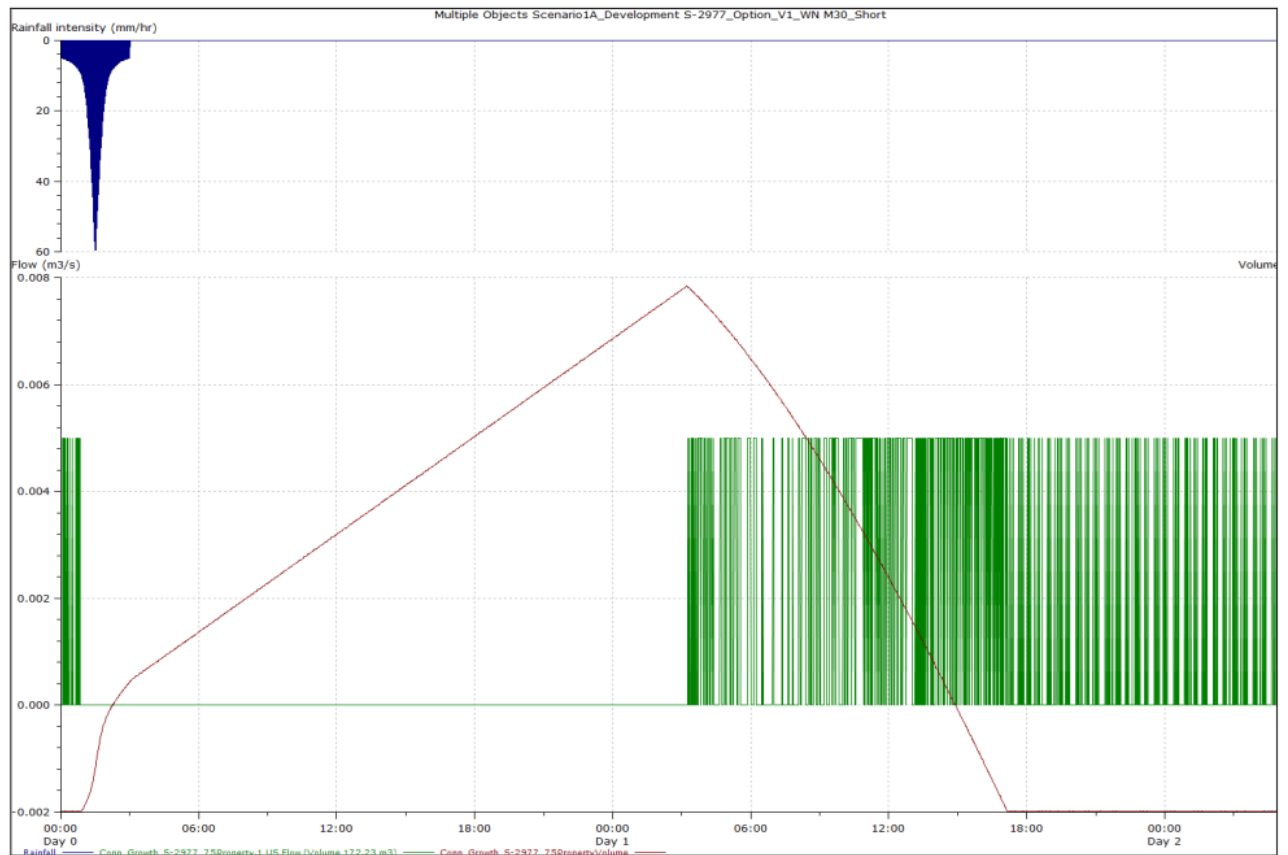
**Figure 3 showing the immediate network draining to Franklin Road pumping station (NFAFSP)**

## Appendix 4



**Figure 4 showing the extent of predicted flood detriment with the development connected**

## Appendix 5



**Figure 5 showing the flow pattern and RTC operation from the conveyance PS during 30 year design event (this assumes a discharge rate of 5 l/s)**